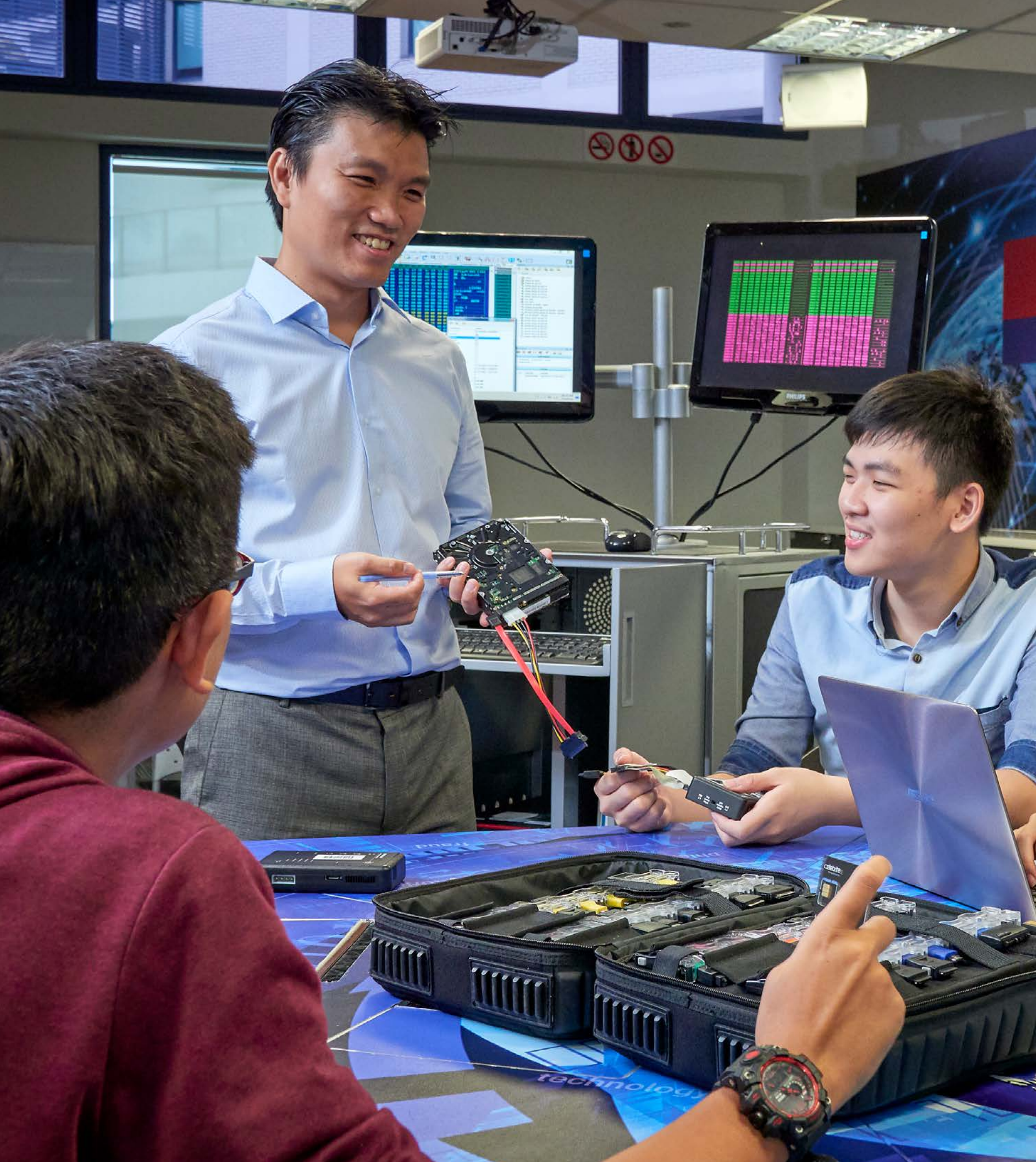


CREATING TOMORROW

For all ITE graduates!



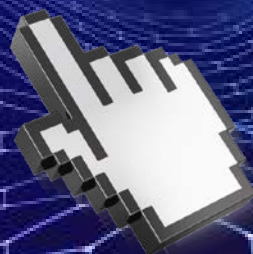
PROCESSING ...



At Temasek Polytechnic (TP), an exciting world filled with invaluable learning opportunities and eye-opening adventures awaits for all ITE graduates!

TP will level-up your existing skills, help you master new ones and transform you into a savvy, industry-ready professional – one who's knowledgeable, adaptable and capable to face the challenges and succeed in the workplaces of tomorrow.

P.S. Be sure to tap on this



when you see it.



Running towards his tomorrow in TP

Daniel Augusto Murlis

ITE College East,
Higher Nitec in Electrical
Engineering Graduate

TP Year 3 student,
Diploma in Biomedical Engineering

My advice to ITE students

If you wish to continue your education at TP, go for it! I could apply my prior ITE knowledge to familiar modules. This advantage gave me more time to focus on the TP subjects, like Engineering Physics and Mathematics, which were new to me.

My dream for tomorrow

I want a career in the healthcare sector, where I can create solutions such as medical devices to improve patient care and algorithms that assist healthcare staff with medical diagnoses.

Thanks to my awesome TP internship experience at Changi General Hospital (CGH) Office of Innovation, I'm a step closer to achieving this dream!



@CGH, undergoing my internship



@Queenstown, visiting rental apartments

My other top TP experiences

As a Temasek LEAD student (TP's talent development initiative), I visited rental apartments that opened my eyes to real-life, living environment issues. I've also participated in insightful talks and discussions with influential figures in Singapore.

Tomorrow's lessons aren't just in classrooms

You'll hone your skills for the 21st Century workplace in TP's high-tech, experiential learning facilities like these.

TP ADVANCED MANUFACTURING CENTRE

Our state-of-the-art facility caters to the learning needs of TP students across the inter-connected fields of engineering, business and IT



TP E-COMMERCE CENTRE

Students from various diploma courses get to train here to level up their digital skills for the booming e-commerce industry

MALWARE ANALYSIS CENTRE

Fully operated by TP Diploma in Cybersecurity & Digital Forensics students, they gain real-life experience by assisting customers to scan and remove any malware found in their laptops



The world's your playground!

With the world opening up its borders again, your TP experience won't be complete without going for exciting overseas trips! Tap to read more.



AUSTRALIA

Our Diploma in Hospitality & Tourism Management students travelled to Perth and gained invaluable insights on how the travel industry adapted during the pandemic.



ENGLAND

A group of TP students flew to London and took part in learning workshops at the University of Bristol, visited famous landmarks and caught theatre shows too!

Cool CCAs

TP offers a wide range of sports, arts and interest groups CCAs. Tap to check them out.

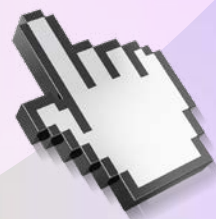


Which TP course can I apply for?

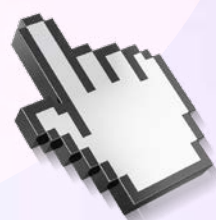
Tap the button that matches your ITE certification. Then select your ITE programme from the menu to find a list of all the TP courses that you're eligible for.

Higher Nitec/ITC/CBS certificate holders, tap here

Note: Higher Nitec applicants with GPA of 3.5 and above (including CCA bonus points) may gain entry into Year 2 of selected TP courses!



Nitec/NTC2 certificate holders, tap here



Come join our TP Family!

JOINT POLYTECHNIC ADMISSIONS EXERCISE [JPAE]

Open to holders of relevant Higher Nitec/CBS/ITC and Nitec/NTC-2 qualifications. Graduating full-time students in their final semester, including those in the Direct-Entry-Scheme to Polytechnic Programme [DPP] are also welcome to apply.

Application Stage

20 to 24 February 2023

Posting Outcome

5 April 2023

POLYTECHNIC EARLY ADMISSIONS EXERCISE FOR ITE STUDENTS [EAE (ITE)]

Open to final-year Nitec and Higher Nitec students, including those in the DPP. Applicants must also possess and be able to demonstrate a strong aptitude and interest in the field related to the TP diploma course that they are applying for.

Application Stage

Tentatively in June 2023

Selection Stage

Tentatively between July to August 2023

Offer and Acceptance Stage

Tentatively between end August to early September 2023

Tap to find full
JPAE and EAE (ITE) details



Tap to discover

TP's 36 full-time diploma courses and five Common Entry Programmes offered by our six academic schools



School of Applied Science



School of Business



School of Design



School of Engineering



School of Humanities & Social Sciences



School of Informatics & IT

Tap for more useful TP information



Application guide for ITE graduates



Course fees



Financial assistance schemes



Scholarships



Virtual tour



How to get to TP

TAP AND FOLLOW US!

